



22 Apr. 10  
DW2005100

applicom® Modbus Plus card allows you to connect your computer to industrial networks.

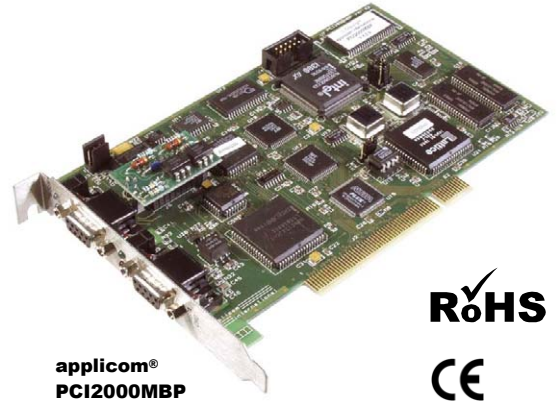
applicom® is the easiest and trouble free solution for data acquisition between PC-Based applications and industrial world.

## Modbus Plus Interface Card

Best choice for SCADA/HMI application

### Features

- All protocols included in the package
- Free Full technical support during 2 years of hardware warranty
- On-board processor eliminates data bottle necks, ensuring delivery of time critical information
- Certified with more 50 major SCADA/HMI packages
- Combo Offer = Modbus Plus + Modbus on the same card
- Modbus Plus Redundancy on the second port
- Powerful Modbus plus diagnostic tools
- Compatible with third-party products Modbus Plus programming software



applicom®  
PCI2000MBP



### Overview

applicom® is a range of intelligent communication solutions, complete and ready to use covering more than 40 protocols among a wide choice of industrial networks and fieldbuses: Ethernet TCP/IP, Profibus, Modbus Plus, Data Highway Plus, WorldFIP and Serial Links. These solutions connect your PC-based applications (HMI, SCADA, MES, Custom applications) to industrial equipment (programmable controller, I/O modules, devices...).

Thanks to applicom® smart technology- built-in processor, each interface cards is able to execute all management and the processing (polling, frame management, etc.) of communications protocols, resulting in extremely fast, efficient application performance.

The applicom® software package includes:

- Graphical configuration software.
- Test and network diagnostic tools.
- Data servers
  - ✓ OPC DA v1.0a, v2.05 and v3.0 (including an OPC client with its source code)
  - ✓ ActiveX Control + VBA code source generator
  - ✓ Wonderware I/O Server (DAServer, DDE, FastDDE, SuiteLink)
- Development libraries
  - ✓ DLL Library
  - ✓ MS Visual Studio (.NET/C#/VB/C++/C), Borland Delphi
  - ✓ National Instruments (LabWindows CVI, LabVIEW/VI)▲

### Supported OS

#### Standard package

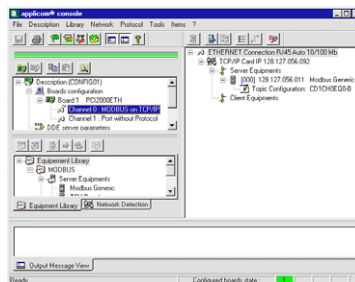
- Windows 32-bit (Vista / XP / 2003 server )

#### Free Download

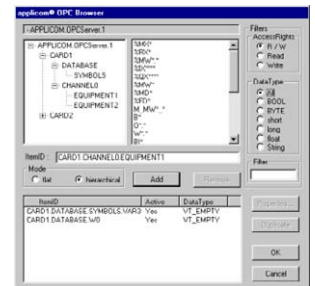
- Windows XP Embedded, VenturCom RTX, VxWorks, QNX, Linux, DOS



Woodhead is a Partner of Collaborative Automation Program



- Configuration Software -



- OPC Server -

# Modbus Plus Interface Card



## Communication Ports

1 Modbus Plus port  
**Port Type:** 1 Modbus Plus port  
**Connector:** 9-pin, D-Sub female  
**LED Indicators:** 2 leds - TX / RX  
**Speed:** 1 Mbps (Token Ring)

+

1 Serial port  
**Port Type:** 1 asynchronous Serial port  
**Connector:** D-Sub, 9 pin, female  
**LED Indicators:** 2 leds - TX / RX  
**Electrical Interface:** RS485/RS422 with galvanic insulation (500 V)  
**Speed:** 50 bps to 38.400 Kbps

OR

1 Modbus Plus redundant port  
**Port Type:** 1 Modbus Plus port  
**Connector:** 9-pin, D-Sub female  
**LED Indicators:** 2 leds - TX / RX  
**Speed:** 1 Kbps (Token Ring)



- Network Diagnostic Tools -

## Hardware Specifications

**Unit:** PCI 5V bus  
**Processor:** Intel 80386EX – 32 MHz  
**Memory:** 4 Mbytes SDRAM  
**Flash Memory:** 512 Kbytes  
**Interruption:** Hardware Plug&Play  
**DPRAM Address:** Hardware Plug&Play (8 Kbytes used per board)  
 Opto-coupled discrete input  
**Digital I/O:** Voltage -> DC +10 to +30 or AC 24 V (50 to 60 Hz)  
 "Watchdog" output contact free from potential (floating) (24V DC, 0.25 A)  
**Dimensions (L x W):** 175mm x 107mm (6.89" x 4.17")  
**Consumption:** 4W (max. 0.8A)  
**Temperature:** Operating: 0° C (32° F) up to +65° C (149° F)  
 Storage: -40° C (-92° F) up to +80° C (176° F)  
**EMC Compliance:** EN55022 Class B, EN55024, EN61000-3-2, EN61000-3-3  
**RoHS:** Yes

## Protocols (all included in the package)

Modbus Plus	Serial	
		• Modbus Plus - all Modbus Plus Client/Server devices
		• Allen-Bradley - DF1 (PLC-5 and SLC Series) <b>M, C / S</b>
		• GE Fanuc / Alstom - SNPX (90-XX and 80-XX Series) <b>M</b>
		• Elsag Bailey - Data Link (5000 & 2000 Series) <b>M</b>
		• Modbus RTU / ASCII <b>M / S</b>
		• Moeller Group - Sucoma (PS32, PS316 Series) <b>M</b>
		• Omron - Sysmac Way <b>M</b>
		• Saia Burgess - S-Bus (PCD Series) <b>M</b>
		• Siemens - 3964/3964R Free or RK512 <b>M, C / S</b>
		• Siemens - AS511 (S5 Series) <b>M</b>
		• Siemens - PPI / PPI+ (S7-200 Series) <b>M</b>
		• Siemens - TI-Dir (TI-505 Series) <b>M</b>
		• Schneider Electric - Uni-Telway (TSX 17, 37, 57) <b>M / S, C / S</b>
		• Development toolkit for Serial protocols <b>M / S</b>

M: Master, S: Slave, C: Client, S: Server

## Ordering Information

Part Number	Product description
APP-MBP-PCI-C	applicom® PCI2000MBP Modbus Plus Network Interface card
Interface lines APP-INT-232-G/N APP-INT-CL2-N	<ul style="list-style-type: none"> <li>RS232 interface line with or without galvanic insulation, in option</li> <li>20mA passive Current loop interface, in option</li> </ul>