



Connect your applications to industrial networks through Ethernet messaging.

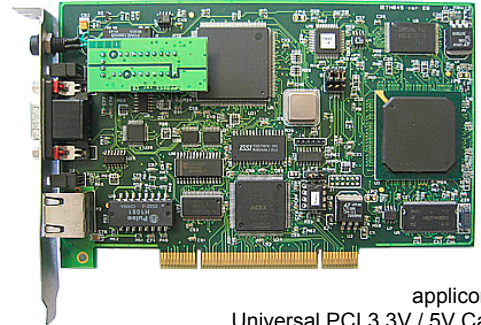
22 Apr. 10  
DW2005101

# applicom® Ethernet PCU2000ETH

Best choice for SCADA/HMI applications

## Features

- RoHS compliant
- All protocols included in the package
- Free full technical support during 2 years of hardware warranty
- On-board processor eliminates data bottle necks, ensuring delivery of time critical information
- Certified with over 50 major SCADA/HMI packages
- Fast Ethernet 10/100, RJ-45 Port
- COMBO Offer =  
Ethernet + Profibus 1.5Mbps  
or  
Ethernet + Serial 38.4Kbps
- Simultaneously run all TCP/IP protocols in Client/Server modes
- Redundancy feature via OPC Server
- Win32 NDIS driver (using applicom® interface as a standard Ethernet card)
- Onboard internal data base (32 Kwords + 32 Kbits)



applicom®  
Universal PCI 3.3V / 5V Card



## Overview

applicom® is a range of intelligent communication solutions, complete and ready to use covering more than 40 protocols among a wide choice of industrial networks and fieldbuses: Ethernet TCP/IP, Profibus, Modbus Plus, Data Highway Plus, WorldFIP and Serial Links. These solutions connect your PC-based applications (HMI, SCADA, MES, custom applications) to industrial equipment (programmable controller, I/O modules, devices...).

Thanks to applicom® smart built-in processor technology - each interface card is able to execute all management and the processing (polling, frame management, etc.) of communications protocols, resulting in extremely fast, efficient application performance.

The applicom® software package includes:

- Graphical configuration software.
- Test and network diagnostic tools.
- Data servers
  - ✓ OPC DA v1.0a, v2.05 and v3.0 (including an OPC client with its source code)
  - ✓ Wonderware I/O Server (DAServer, DDE, FastDDE, SuiteLink)
- Development libraries
  - ✓ DLL Library
  - ✓ MS Visual Studio (.NET/C#/VB/C++/C), Borland Delphi
  - ✓ National Instruments (LabWindows CVI, LabVIEW/VI)

## Supported OS

### Standard package

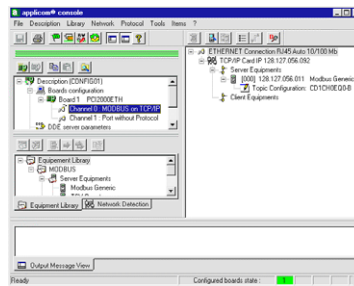
- Windows 32-bit (Vista / XP / 2003 Server)

### Free Download

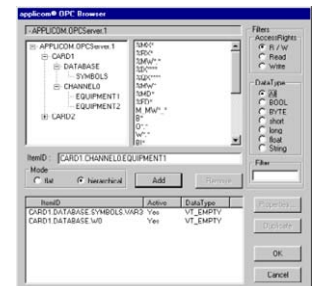
- Windows XP Embedded, VenturCom RTX, VxWorks, QNX, Linux, DOS

## Compatible with

- Altus
- GE Fanuc
- Mitsubishi Electric Automation
- Omron
- Rockwell Automation
- Schneider Electric
- Siemens



- Configuration Software -



- OPC Server -



## Communication Ports

### 1 Ethernet port

<b>Port Type</b>	1 Ethernet port - IEEE 802.3 for industrial and office (NDIS driver for XP/2000/NT)
<b>Connector</b>	10/100baseT (RJ45)
<b>LED Indicators</b>	4 LEDs - TX, RX, Link, 100 Mbps
<b>Speed</b>	10/100 Mbps (Auto-negotiation)

+

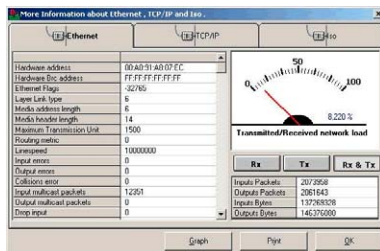
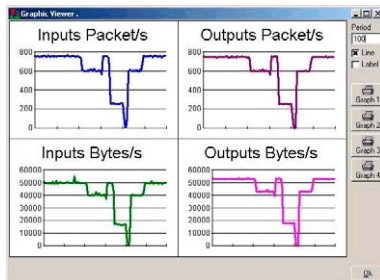
### 1 Profibus port

<b>Port Type</b>	1 Profibus port (EN 50 170)
<b>Connector</b>	D-Sub, 9 pin, female
<b>LED Indicators</b>	2 LEDs - TX / RX
<b>Electrical Interface</b>	RS485 with galvanic insulation (500 V)
<b>Speed</b>	9.6 Kbps to 1.5 Mbps

or

### 1 Serial port

<b>Port Type</b>	1 asynchronous serial port
<b>Connector</b>	D-Sub, 9 pin, male
<b>LED Indicators</b>	2 LEDs - TX / RX
<b>Electrical Interface</b>	RS485/RS422 with galvanic insulation (500 V)
<b>Speed</b>	50 bps to 38.400 Kbps



- Network Diagnostic Tools -

## Hardware Specifications

<b>Unit</b>	PCI rev 2.2, 32-bit, 33 MHz, PCI Universal 3.3V/5V keying, PCI-X compatible
<b>Processor</b>	AMD SC520 - 133 MHz
<b>Memory</b>	16 Mbytes SDRAM
<b>Flash Memory</b>	4 Mbytes
<b>Interruption</b>	Hardware Plug&Play
<b>DPRAM Address</b>	Hardware Plug&Play (32 Kbytes used per board)
<b>Digital I/O</b>	Opto-coupled discrete input Voltage -> DC +10 to +30 or AC 24 V (50 to 60 Hz) "Watchdog" output dry contact (24V DC, 0.25 A)
<b>Dimensions (L x W)</b>	168mm x 107mm (6.61" x 4.21")
<b>Consumption</b>	5.5 W
<b>Temperature</b>	Operating: 0° C (32° F) up to +65° C (149° F) Storage: -40° C (-40° F) up to +85° C (185° F)
<b>EMC Compliance</b>	EN55022 Class B, EN61000-6-2, EN61000-3-2, EN61000-3-3
<b>RoHS Compliant</b>	Yes

## Protocols (all included in the package)

<b>Ethernet TCP/IP</b>	<ul style="list-style-type: none"> <li>Allen-Bradley - EtherNet/IP (ControlLogix, PLC-5 &amp; SLC 500 Series)</li> <li>Alstom - SRTP (Alspa C80-35 and C80-75)</li> <li>Altus - AInet II (AL2000 and WebGate Series)</li> <li>GE Fanuc - SRTP (90-30 and 90-70 Series)</li> <li>Mitsubishi - Melsec (A and Q Series)</li> <li>Omron - FINS (C, CV and CS Series)</li> <li>Schneider - Open Modbus TCP (TSX Premium, TSX Micro, etc)</li> <li>Schneider - Uni-TE (TSX Premium, TSX Micro, etc)</li> <li>Send/Receive on UDP (dev. free messaging on UDP)</li> <li>Siemens - Industrial Ethernet (S5, S7 and TI-505 Series)</li> <li>Development toolkit for TCP and UDP protocols in client/server modes</li> </ul>
<b>Ethernet</b>	<ul style="list-style-type: none"> <li>Schneider - Ethway (TSX Premium, TSX Micro, etc)</li> <li>Siemens - Industrial Ethernet ISO (S5, S7, TF and TI Series)</li> </ul>
<b>Profibus</b>	<ul style="list-style-type: none"> <li>Profibus-DP V0 Master Class-1 &amp; Class-2 - All DP slaves devices</li> <li>FDL for S5 Master - Siemens S5</li> <li>S7 / MPI Master - Siemens S7-300, S7-400</li> <li>Send/Rec on FDL - Develop your free messaging on Profibus-FDL</li> </ul>
<b>Serial</b>	3964/3964R, AS511, DataLink, DF1, Modbus, PPI/PPI+, Saia-BUS, SNP-X, SucoMA, Syscam-Way, TI-Direct, Uni-Telway, and development toolkit for Serial protocols.

## Ordering Information

Part Number	SAP	Product description
APP-ETH-PCU-C	1120000005	applicom® PCU2000ETH Ethernet TCP/IP 10/100 Mbps card, Universal PCI bus (3.3V / 5V), RoHS compliant
APP-EPB-PCU-C	1120000001	applicom® PCU2000ETH Combo Ethernet 10/100 Mbps + Profibus 1.5 MB card, Universal PCI bus (3.3V / 5V), RoHS compliant
APP-ESR-PCU-C	1120000003	applicom® PCU2000ETH Combo Ethernet 10/100 Mbps + Serial RS485/422 card, Universal PCI bus (3.3V / 5V), RoHS compliant

Other related products: IP67/IP20 Ethernet switches, Software solution based on standard Ethernet card, Ethernet I/O for control/command, Ethernet connectivity.

To contact us: [www.woodhead.com](http://www.woodhead.com)

North America: US: +1 (630) 969-4550 – Canada: +1 519 725 5136  
 Europe: France: +33 2 32 96 04 20 – Germany: +49 7252 94 96 0 – Italy: +39 (02) 950551 – UK: +44 (1252) 720720  
 Asia: China: +86 21-5048-0889 Singapore: +65 6-268-6868 – Japan: +81 46-265-2325 – Korea: +82 31-492-9000