



v1 – December 2004  
DW200577

Woodhead's SST™ Profibus Interfaces provide high-performance control and the support required for your Profibus applications.

## 3<sup>rd</sup> Generation SST™ Interfaces

For Controlling and Monitoring Profibus Applications

### Features

- Simultaneous execution of Profibus DP Master, DP Slave and FDL (layer 2)
- Manages PROFIBUS DP-V1 services
- Supports all standard Profibus baud rates: 9.6 Kbaud to 12 Mbaud
- Supports 16-bit transfers (VME D16) with both VME A24 (standard) and A16 (short I/O) address transfers
- Two versions of network interface cards provide the option of connecting to one or two independent Profibus networks
- Diagnostic LEDs for system status, watchdog timeout, and communications status

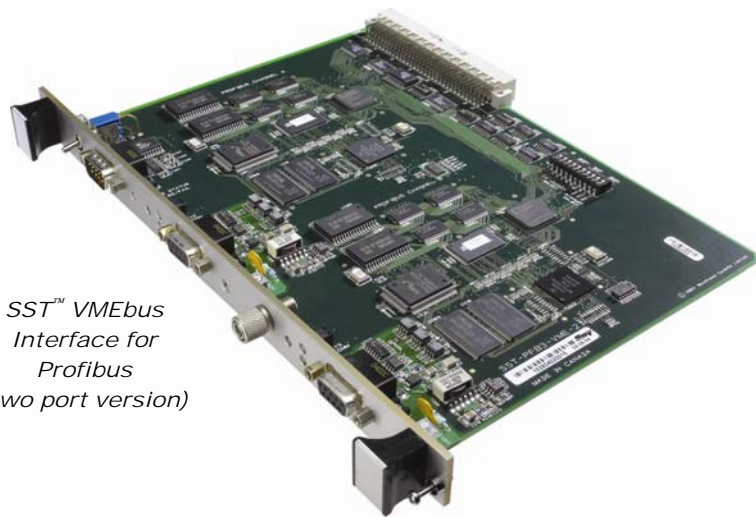
### OS and Drivers Supported

#### Standard Package

- DP Configuration software for off-line configuration
- Custom driver development software
- Sample code and Microsoft Windows 32-bit kernel drivers



**Woodhead is a  
member of  
Profibus International**



*SST™ VMEbus  
Interface for  
Profibus  
(two port version)*

### Product Overview

The SST™ Profibus interface card connects your VMEbus computer to Profibus DP-V0, DP-V1 and FDL (layer 2) networks. It provides high-speed deterministic communication between automation systems and their decentralized peripherals.

The SST™ Profibus VME interface card connects the following to Profibus:

- VME based programmable controllers
- VME based motion controllers
- VME based computers

The SST™ Profibus VME interface card interfaces with the host processor through shared dual ported memory. A fully documented host memory interface is provided. The card does not require external libraries, which simplifies custom driver development in your chosen operating system. DOS example programs with C source are included with each card to assist you with your software development.

### Configuration Tool

The PROFIBUS Console is an optional Windows-32-bit application, which supports the off-line commissioning of PROFIBUS DP-V0 and DP-V1 networks.

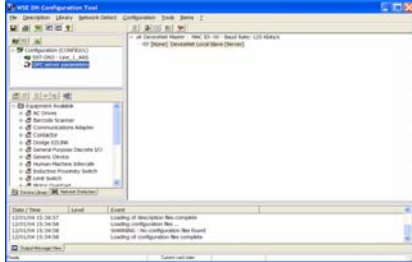
Very intuitive, the Drag & Drop user interface of the console provides a simple setup by using the PROFIBUS GSD files supplied by the manufacturer of the field devices. All configuration files will be downloaded later to the SST™ Profibus VMEbus card via the serial port. ▲

# SST™ VME Interface Card



## Software Tools

Software available for the SST™ Profibus Interface Cards enables fast integration of industrial communication into your application.



Configuration console for Off-line Configuration

## Related products



**Brad Harrison® PROFIBUS Diagnostic Plug 90°**  
Part number : PA9D01-42

**Brad Harrison® PROFIBUS Diagnostic Plug 0°**  
Part number : MA9D01-42

## Network Specifications

<b>Protocol</b>	<ul style="list-style-type: none"> <li>• Profibus Master DP-V0, Class 1 and Class 2</li> <li>• Profibus Slave DP-V0</li> <li>• PROFIBUS Master DP-V1, Class 1 and Class 2</li> <li>• FDL Layer 2</li> </ul>
<b>Data Rate</b>	<ul style="list-style-type: none"> <li>• All Profibus data rates up to 12Mbps</li> </ul>
<b>Cable</b>	<ul style="list-style-type: none"> <li>• Belden 3079A</li> <li>• Brad Harrison® 85-0001 PVR2 conductor with shield, UL-listed</li> </ul>
<b>Connector</b>	<ul style="list-style-type: none"> <li>• DB9 female connector per port/channel</li> <li>• Brad Harrison Diagnostic D-Sub connector part number: MA9D01-42</li> </ul>
<b>Isolation</b>	<ul style="list-style-type: none"> <li>• 1000 V</li> </ul>

## Hardware Specifications

<b>Bus Interface</b>	VME Spec VME54-compliant (Vita 1.1 1997)
<b>Processor</b>	ColdFIRE 5272
<b>Memory</b>	Minimum 256K Window in host memory map
<b>Diagnostics</b>	LEDs for system status, watchdog timeout, communications status
<b>Interruption</b>	DIP Switch selectable level IRQ 1 through 7 or none
<b>Dimensions</b>	Double-height (6U) module
<b>Typical Current Draw</b>	+5V +/- 5% 1-port / channel card: 800 mA 2-port / channel card: 1400 mA
<b>Voltage Requirements</b>	5V
<b>Resources</b>	Memory: 256K x 16-bit window per port / channel, located anywhere in VME standard space I/O: 32-byte range per port / channel, located on a 1k boundary determined by the DIP switch settings
<b>Operating Temperature</b>	0° C (32° F) up to +60° C (140° F)
<b>Storage Temperature</b>	-40° C (-40° F) up to +85° C (185° F)
<b>Humidity</b>	5% to 90% non-condensing

## Ordering Information

Part Number	Product description
<b>SST-PB3-VME-1</b>	SST™ Profibus card, VMEbus, 1 port / channel
<b>SST-PB3-VME-2</b>	SST™ Profibus card, VMEbus, 2 ports / channels
<b>SST-PB3-CNF-P</b> <b>SST-PB3-CNF-U</b>	Configuration Console Application, parallel key Configuration Console Application, USB key

Other related products: IP67/IP20 Profibus I/O devices, gateway solutions, cable assemblies, diagnostic tools, network interfaces.

To contact us: [www.woodhead.com](http://www.woodhead.com)

**North America:** US + 1 800 225 7724 -Canada, +1 519 725 5136

**Europe:** France, +33 2 32 96 04 20 – Germany, +49 711 782 3740 – Italy, +39 010 59 30 77 – United Kingdom, +44 1495 356300

**Asia:** China, +86 21 50328080 – Singapore, +65 261 6533 – Japan, +81 45 224 3560

All trademarks contained herein are the property of their respective owners. © 2005 Woodhead Industries, Inc.