



February 2005  
DW200578

Woodhead's SST™ Profibus Interfaces provide high-performance control and the support required for your Profibus applications.

## 3<sup>rd</sup> Generation SST™ Interfaces

For Controlling and Monitoring Profibus Applications

### Features

- Simultaneous execution of Profibus DP Master, DP Slave and FDL (layer 2)
- Master Class 1 and Class 2 DPV1 support through Windows API
- Supports all standard baud rates: 9.6 Kbaud to 12 Mbaud
- Flash memory for storage of configuration
- Auto baud detection
- Diagnostic LEDs for system status, watchdog timeout, and communications status
- Support for various bus formats
- Single and two channel versions available

### OS and Drivers Supported

- Microsoft Windows NT4 / 2000 / XP drivers
- DP Configuration software with enhanced diagnostics
- OPC Server V3.0
- Open, documented memory map interface with example C source code and Windows 32-bit DLLs for custom driver development

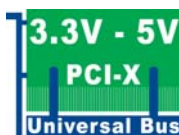
### Related Products



Brad Harrison®  
Diagnostic  
D-Sub Connector



SST™ PCI Bus  
Profibus Interface



Woodhead's SST™ network interface cards are ideal for applications where high-performance control and reliability are required. Backed by superior support and service, Woodhead network interfaces support a wide range of network protocols and bus formats.

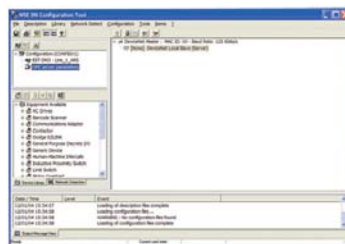
### Overview

SST™ Network Interface Cards for Profibus can be found in many applications including:

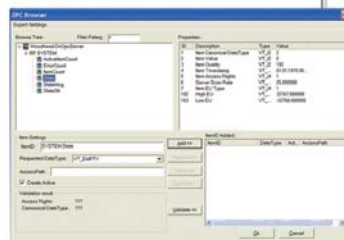
- Operator Interface
- Human-Machine Interface
- PC Control
- Device Development
- Network Diagnostics

### Software Tools

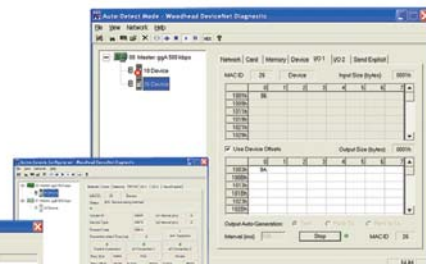
Software available for the SST™ Profibus Interface Cards enables fast integration of industrial communication into your application. ▲



Configuration Console



OPC Browser



Diagnostic and  
Test Tools

# SST™ Profibus Interfaces



## Network Specifications

<b>Protocol</b>	<ul style="list-style-type: none"> <li>Profibus Master DP-V0, Class 1 and Class 2</li> <li>Profibus Slave DP-V0</li> <li>PROFIBUS Master DP-V1, Class 1 and Class 2</li> <li>FDL Layer 2</li> </ul>
<b>Data Rate</b>	<ul style="list-style-type: none"> <li>All Profibus data rates up to 12Mbps</li> </ul>
<b>Cable</b>	<ul style="list-style-type: none"> <li>Belden 3079A</li> <li>Brad Harrison® 85-0001 PVR2 conductor with shield, UL-listed</li> </ul>
<b>Connector</b>	<ul style="list-style-type: none"> <li>DB9 female connector per port/channel</li> <li>Brad Harrison Diagnostic D-Sub connector part number: MA9D01-42</li> </ul>
<b>Isolation</b>	<ul style="list-style-type: none"> <li>1000 V</li> </ul>

## Hardware Specifications

	PCI	ISA	PC/104
<b>Bus Interface</b>	Compliant with PCI 2.2; will operate in 2.3 and some 2.1-compliant systems	Compliant with EISA Specification Version 3.12	Compliant with PC/104 Specification Version 2.3
<b>Processor</b>	ColdFIRE 5272		
<b>Memory</b>	256K Window	Min. 8K Window in host memory map (max. 256K and default 16K)	Min. 8K Window in host memory map (max. 256K and default 16K)
<b>Diagnostics</b>	LEDs for system status and communications status		
<b>Interrupts</b>	Hardware Plug & Play (32 Kbytes used per card)	Software selectable level IRQ 0 through 7	
<b>Dimensions (Length x Width)</b>	6.875 in x 4.2 in (17.463 cm x 10.668 cm)	6.225 in x 4.2 in (15.812 cm x 10.668 cm)	9.588 cm x 9.017 cm (3.775 in x 3.550 in)
<b>Typical Current Draw</b>	600 mA		
<b>Voltage Requirements</b>	5V or 3.3V	5V	
<b>Resources</b>	PCI Region 0 = 128 bytes PCI memory PCI Region 2 = 256K of 32-bit PCI memory PCI Region 3 = 32 bytes of 32-bit PCI memory One PCI interrupt	ISA Memory Region = 256K of 16-bit ISA memory ISA I/O Region = 8 bytes of ISA I/O memory One ISA interrupt	PC/104 Memory Region = 256K of 16-bit PC/104 memory PC/104 I/O Region = 8 bytes of PC/104 I/O memory One PC/104 interrupt
<b>Operating Temperature</b>	0°C (32°F) up to +60°C (140°F)		
<b>Storage Temperature</b>	-40°C (-40°F) up to +85°C (185°F)		
<b>Humidity</b>	5% to 95% non-condensing		

## Ordering Information

Part Number	Product Description	Other Related Products
SST-PB3-PCU	Profibus card, Universal PCI bus (3.3V / 5V)	IP67 and IP20 Profibus I/O Devices Gateway Solutions Cable Assemblies Diagnostic Tools Network Interfaces
SST-PB3-104	Profibus card, PC/104	
SST-PB3-ISA	Profibus card, ISA	
SST-PB3-CNF-P	Configuration Console Application, parallel key	
SST-PB3-CNF-U	Configuration Console Application, USB key	
SST-PB3-OPC	OPC Server	
SST-PB3-104-25	Bulk of 25 of the SST-PB3-104	
SST-PB3-PCU-25	Bulk of 25 of the SST-PB3-PCU	