



CH-3000

Mobile operator terminal housing
with enabling switch

for mobile operator terminals



Guarantees your full approval: CH-3000

Security in your hands

For most companies, the cost of developing an ergonomic housing for displays or control terminals for use with robots, drives or controllers is normally prohibitive. Fortunately, this cost can now be saved in the future! Following extensive consultation with systems engineers and users, Bernstein presents a universal solution for your requirements: The new CH-3000 defines a new industrial standard in ergonomics and security for housing mobile control units.

The possible dangers associated with tasks such as the programming, control, operation and commissioning of industrial robots, machines and systems often dictate the need for tamper-proof enabling switches to maximise operator safety. This feature is already integrated in the CH-3000, however, the high level of security against by-passing of the enabling function is not at the expense of ergonomics. The housing shape provides superb support against the operator's body and allows extended periods of fatigue-free operation.

The CH-3000 is supplied as an empty housing with an integrated enabling switch ready to be fitted with any desired display or control element, e.g. installed panels from a variety of manufacturers, specially developed HMI electronics, PLCs or visualisation modules.

Everything you need inside

- Empty housing with installation space for standard, command and alarm devices
- Three-stage, two-channel enabling switch with actuator for right and left hand operation
- Tamper-proof (BG-certified)
- Installation of LC displays up to 8.4" and membrane keypads possible
- Meets the requirements of Cat.4 in accordance with EN 954-1
- Ergonomic design with shaped handles
- Protection class IP 65 in accordance with EN 60529
- Industrial design made of glass fibre reinforced polyamide
- Colour tone RAL 7035
- Internal threaded pillars for mounting components
- Cable clamping duct in the handle
- Holder for stylus \varnothing 9.5 mm (pin not included)
- Customer-specific features on request



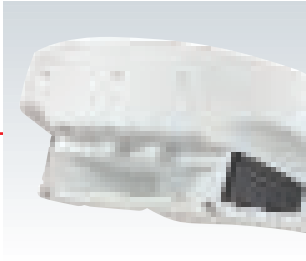
The ergonomically shaped CH-3000 housing fits comfortably in the hand/forearm.



Integral cable guide offers kink protection and strain relief for the cable entry.

000 for mobile operator terminals

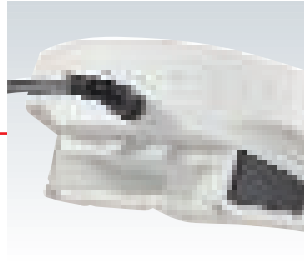




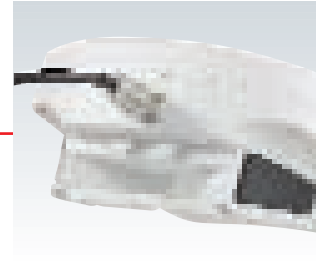
Basic Housing
Art. No. 220 0007 000



Version with slide-in cable entry connection
Art. No. 220 0008 000



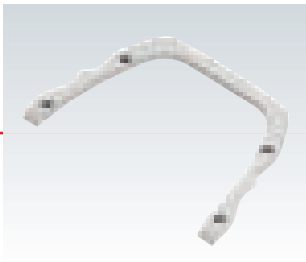
Version with fixed cable connection
Art. No. 220 0015 000



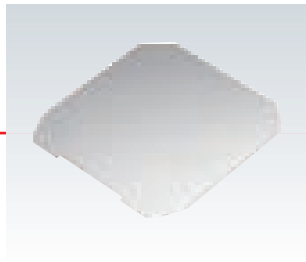
Version with 16-pole connector socket
Art. No. 220 0016 000



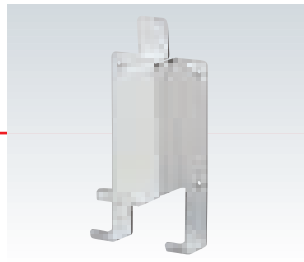
The CH-3000 has a three-stage, two channel enabling switch and can be used in systems up to Cat. 4. Both circuits are electrically isolated and of a redundant design.



Carrying handle with fastening screws
Art. No. 980 6516 000



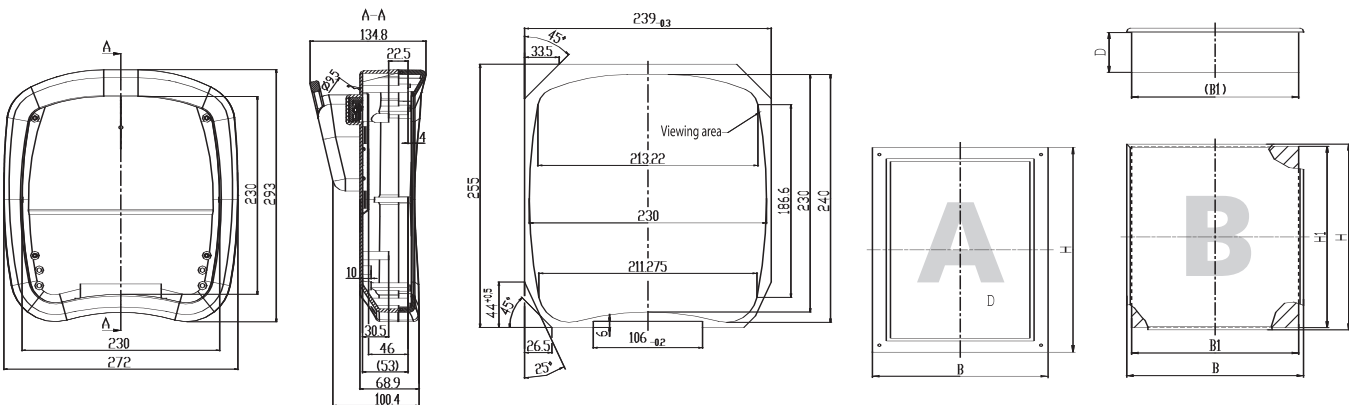
Aluminium front panel 4 mm, optional customising service available
Art. No. 980 6517 000



Wall bracket
Art. No. 980 6413 000



Other accessories on request



The available max. installation space for displays (A) or installation panels (B)

A	B (mm)	H (mm)	D (mm)
	1	189	220
2	149	225	30

B	B (mm)	B1 (mm)	H (mm)	H1 (mm)	D (mm)
	1	200	189	210	210
2	210	195	160	149	45
3	210	205	160	149	40

More safety and ergonomics in control and observation

Modular control housing



■ CC-4000
CC-4000 for Simatic panel



■ CC-4000 SL
CC-4000 SL for Simatic panel



■ CC-3000

Industrial workstation



■ WS-6000

Mobile control terminals



■ MBDT-L4
MBDT-L16

International Headquarters

Bernstein AG

Tieloser Weg 6
D-32457 Porta Westfalica
Tel. +49 571 793 0
Fax +49 571 793 555
info@bernstein-ag.de
www.bernstein-ag.de

China

Bernstein Safe Solutions (Taicang) Co., Ltd.

Tel. +86 512 81608180
Fax +86 512 81608181
info@bernstein-safesolutions.cn

Denmark

Bernstein A/S

Tel. +45 7020 0522
Fax +45 7020 0177
bernstein@bernstein.dk

France

Bernstein S.A.R.L.

Tel. +33 1 64 66 32 50
Fax +33 1 64 66 10 02
info@bernstein.fr

Netherlands

Bernstein BV

Tel. +31 314 366088
Fax +31 314 361256
info@bernstein.nl

Italy

Bernstein S.r.l.

Tel. +39 035 4549037
Fax +39 035 4549647
sales@bernstein.it

Great Britain

Bernstein Ltd (UK)

Tel. +44 1922 744999
Fax +44 1922 457555
sales@bernstein-ltd.co.uk

Austria

Bernstein GmbH

Tel. +43 2256 62070 0
Fax +43 2256 62618
office@bernstein.at

Service hotlines:

Product

+49 571 793 3000

Order

+49 571 793 3010

Technical

+49 571 793 3020