

Woodhead Worldwide

North America

CANADA

Woodhead Software & Electronics

50 Northland Road
Waterloo, Ontario N2V 1N3
Tel: +1 519-725-5136
Fax: +1 519-725-1515
E-mail: sales@mySST.com

U.S.A.

Woodhead LP

3411 Woodhead Drive
Northbrook, Illinois 60062
Tel: +1 847-272-7990
Fax: +1 847-272-8133
E-mail: info@domino.
danielwoodhead.com

Europe

FRANCE

Woodhead Software & Electronics

43, rue Mazagran
76320 Caudebec-lès-Elbeuf
Tel: +33 2.32.96.26.36
Fax: +33.2.32.96.26.37
E-mail: infofr@applicom-int.com

GERMANY

Woodhead Software & Electronics

Im Gässle 9
70771 Leinfelden-Echterdingen
Tel: +49 711/78 23 74-0
Fax: +49 711/78 23 74-11
E-mail: infode@applicom-int.com

ITALY

Woodhead Software & Electronics

Piazza della Vittoria, 10 int.6
16121 Genova
Tel: +39 010 59 30 77
Fax: +39 010 595 69 25
E-mail: infoit@applicom-int.com

UNITED KINGDOM

Woodhead Connectivity Ltd

Factory N° 9
Rassau Industrial Estate
Ebbw Vale, Gwent, Wales NP3 5SD
Tel: +44 1495-350436
Fax: +44 1495-350877
E-mail: contact@wdhd.co.uk

Asia

JAPAN

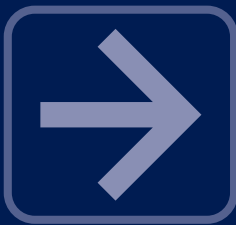
Woodhead Japan Corp

Unit 4309,
Yokohama Landmark Tower
2-2-1 Minatomirai, Nishi-ku
Yokohama-shi,
Kanagawa-ken 220-8143
Tel: +81 4-5224-3560
Fax: +81 4-5224-3561
E-mail: sst@woodhead.co.jp

SINGAPORE

Woodhead Asia Pte Ltd

No.4, Toh Tuck Link,
Level 3, Mezzanine,
Markono Logistics Building,
596 226 SINGAPORE
Tel: +65 626-16533
Fax: +65 626-13588
E-mail: stevenneo@woodhead.com.sg



PC104-CANIO



open industrial communication concept

applicomIO® PC104-CANIO



Based on a unique industrial communications concept, applicomIO® provides high-speed, deterministic communications between real-time applications (Open Controller, PC-based Control, Soft Logic, etc.) and various I/O modules communicating through fieldbuses.

The applicomIO® software package includes:

- Configuration software.
- Powerful test and diagnostic tools.
- Data servers (OPC, ActiveX, DDE, FastDDE, SuiteLink).
- I/O libraries for Windows NT (DLL), Windows CE (DLL), Linux, and VenturCom's hard real time extensions (RTSS).
- Drivers for most of the mainstream soft-logic packages (InControl, IsaGRAF, Paradym31, SUPER I/O, VisualPLC, WizPLC, etc.).

A smart **ADM** (Automatic Dual port ram Mapping) mechanism avoids the necessity of I/O tag configuration in the memory of the applicomIO® board, allowing easy and efficient interface to real-time applications. More than a simple I/O acquisition module, applicomIO® provides important information such as automatic detection of I/O devices, online diagnostics, fieldbus analysis, watchdog mechanism...

The communications layers are completely embedded on applicomIO® communications processors, allowing fast, efficient communications with field devices with resultant highly improved control application.

Particularly, the applicomIO® **PCI-CANIO** board is equipped with **1 CAN port**, handling CANopen protocol in Master/Scanner mode up to 1Mbps.

applicom international is a member of **CiA** (CAN in Automation) organisation.

Compatibles platforms

- Windows 32-bits (XP, 2000, NT 4, 98)
- Windows Embedded (XPe)
- VenturCom RTX
- VxWorks
- QNX
- Linux
- Dos

Protocols

Protocol	Device
CANopen Master/Scanner	All CANopen slave devices with following profiles: DSP401, DSP 402, DSP 403, WD 404, DSP 406

Technical Data

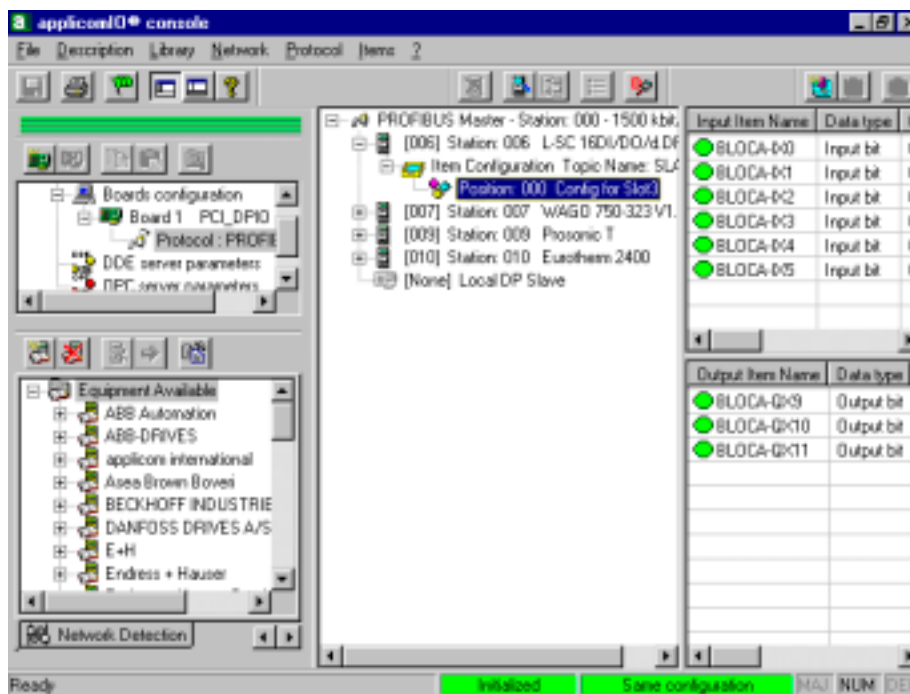
Unit	PC/104 board
Processor	AMD SC520 - 100 MHz
Memory	8 Mbytes dynamic RAM
Flash Memory	512 Kbytes flash memory
Supported Interrupts	2, 3, 4, 5, 6, 7, 10, 11, 12, 14, 15
DPRAM Address	from C8000 to DE000 (8 Kbytes used per board)
Discrete Input	Opto-coupled discrete input Voltage -> DC +10 to +30 or AC 24 V (50 to 60 Hz)
Discrete Output	"WatchDog" output contact free from potential (floating) (24V DC, 0.25 A)
Technology	SMC technology; Complies with EMC for both Industrial and office use
Dimensions (L x W)	95mm x 90mm (3.74" x 3.54")
Consumption	5 W (max. 0.8A)
Operating Temperature	-40° C (-40° F) up to +85° C (185° F)
Storage Temperature	-40° C (-40° F) up to +85° C (185° F)

CAN Port

Interface type	1 CAN port, CAN 2.0A network with 11-bit identifier
CAN controller	Phillips SJA1000
CAN transceiver	Phillips 82C251
Connector Type	HE13 (2 x 5 pins, allows a straight ribbon connection to a 9-pin Sub-D male)
Speed	1, 10, 20, 50, 100, 125, 250, 500, 800, 1000 Kbps
Transmission LEDs	1 Network state / 1 error indicator

Utilities

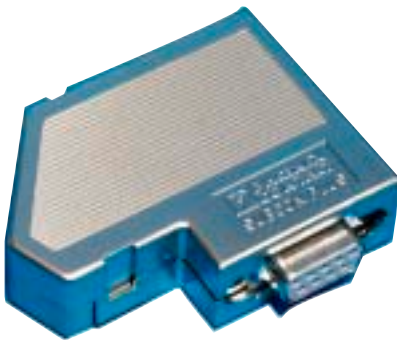
- Communication ActiveX control, OPC server, DDE/SuiteLink server
- Drivers for SoftLogic Packages
- API Library for Windows and for VenturCom RTX Hard Real time kernel
- applicomIO® Console: the configuration tool including features:
 - Automatic detection of devices connected on the network
 - Analysis and presentation of the content of description files (EDS, GSD, etc)
 - On line actions and commands (information about the network and access to the device parameters).
 - Define items to the input/output data used by the applicomIO® servers (ActiveX, OPC, DDE/SuiteLink)
 - Configuration Manager used to define and store several user configurations
 - Test and diagnostic tool



Add-on

Connector

- SUBCON-PLUS F3 Connector
(Phœnix Contact)



References

applicomIO® on PC104-CANIO board	Reference
under Windows XP, 2000, NT4	I41CWCO

Connector	Reference
SUBCON-PLUS F3 Connector (Phœnix Contact)	SUBCON-PLUS F3

Protocol	Device	Reference
CANopen	CANopen slave devices, Profiles: DSP 401, DSP 402, DSP 403, WD 404, DSP 406	LSCO