



Woodhead's SST™ Profibus Interfaces provide high-performance control and the support required for your Profibus applications.

23 Apr. 10  
DW200577

## SST™ VME Interface Card

For Controlling and Monitoring Profibus Applications

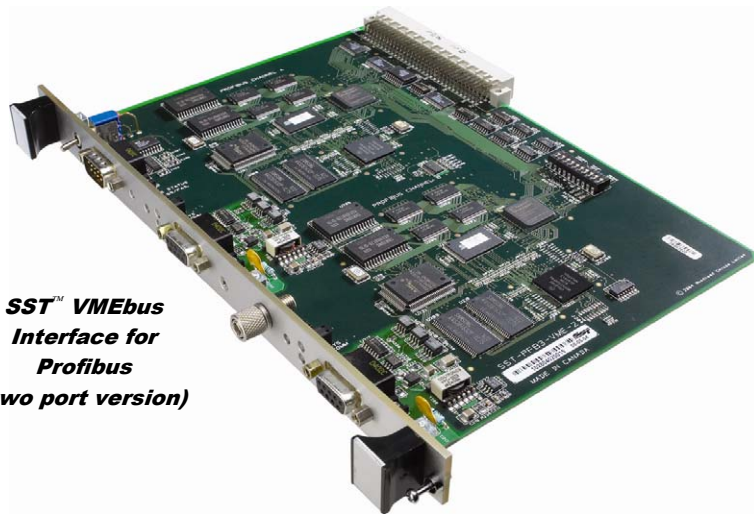
### Features

- Simultaneous execution of Profibus DP Master, DP Slave and FDL (layer 2)
- Supports all standard Profibus baud rates: 9.6 Kbaud to 12 Mbaud
- Supports 16-bit transfers (VME D16) with both VME A24 (standard) and A16 (short I/O) address transfers
- Two versions of network interface cards provide the option of connecting to one or two independent Profibus networks
- Diagnostic LEDs for system status, watchdog timeout, and communications status

### OS and Drivers Supported

#### Standard Package

- DP Configuration software for off-line configuration
- Custom driver development software
- Sample code and Microsoft Windows 32-bit kernel drivers



*SST™ VMEbus  
Interface for  
Profibus  
(two port version)*

### Product Overview

The SST™ Profibus interface card connects your VMEbus computer to Profibus DP-V0, and FDL (layer 2) networks. It provides high-speed deterministic communication between automation systems and their decentralized peripherals.

The SST™ Profibus VME interface card connects the following to Profibus:

- VME based programmable controllers
- VME based motion controllers
- VME based computers

The SST™ Profibus VME interface card interfaces with the host processor through shared dual ported memory. A fully documented host memory interface is provided. The card does not require external libraries, which simplifies custom driver development in your chosen operating system. DOS example programs with C source are included with each card to assist you with your software development.

### Configuration Tool

The PROFIBUS Console is an optional Windows-32-bit application, which supports the off-line commissioning of PROFIBUS DP-V0 network.

Very intuitive, the Drag & Drop user interface of the console provides a simple setup by using the PROFIBUS GSD files supplied by the manufacturer of the field devices. All configuration files will be downloaded later to the SST™ Profibus VMEbus card via the serial port.



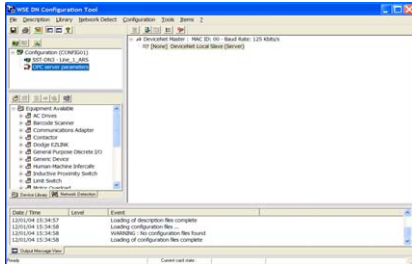
Member of the  
PROFIBUS International.

# SST™ VME Interface Card



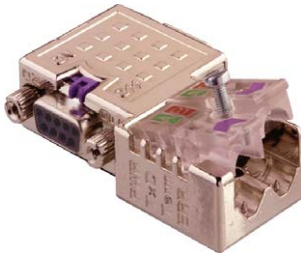
## Software Tools

Software available for the SST™ Profibus Interface Cards enables fast integration of industrial communication into your application.



Configuration console for Off-line Configuration

## Related products



Brad Harrison® PROFIBUS Diagnostic Plug 90°  
Part number : PA9D01-42

Brad Harrison® PROFIBUS Diagnostic Plug 0°  
Part number : MA9D01-42

## Network Specifications

<b>Protocol</b>	<ul style="list-style-type: none"> <li>Profibus Master DP-V0, Class 1 and Class 2</li> <li>Profibus Slave DP-V0</li> <li>FDL Layer 2</li> </ul>
<b>Data Rate</b>	<ul style="list-style-type: none"> <li>All Profibus data rates up to 12Mbps</li> </ul>
<b>Cable</b>	<ul style="list-style-type: none"> <li>Belden 3079A</li> <li>Brad Harrison® 85-0001 PVR2 conductor with shield, UL-listed</li> </ul>
<b>Connector</b>	<ul style="list-style-type: none"> <li>DB9 female connector per port/channel</li> <li>Brad Harrison Diagnostic D-Sub connector part number: MA9D01-42</li> </ul>
<b>Isolation</b>	<ul style="list-style-type: none"> <li>1000 V</li> </ul>

## Hardware Specifications

<b>Bus Interface</b>	VME Spec VME54-compliant (Vita 1.1 1997)
<b>Processor</b>	ColdFIRE 5272
<b>Memory</b>	Minimum 256K Window in host memory map
<b>Diagnostics</b>	LEDs for system status, watchdog timeout, communications status
<b>Interruption</b>	DIP Switch selectable level IRQ 1 through 7 or none
<b>Dimensions</b>	Double-height (6U) module
<b>Typical Current Draw</b>	+5V +/- 5% 1-port / channel card: 800 mA 2-port / channel card: 1400 mA
<b>Voltage Requirements</b>	5V
<b>Resources</b>	Memory: 256K x 16-bit window per port / channel, located anywhere in VME standard space I/O: 32-byte range per port / channel, located on a 1k boundary determined by the DIP switch settings
<b>Operating Temperature</b>	0° C (32° F) up to +60° C (140° F)
<b>Storage Temperature</b>	-40° C (-40° F) up to +85° C (185° F)
<b>Humidity</b>	5% to 90% non-condensing

## Ordering Information

Part Number	SAP	Product description
SST-PB3-VME-1	1120140004	SST™ Profibus card, VMEbus, 1 port channel
SST-PB3-VME-2	1120140005	SST™ Profibus card, VMEbus, 2 port channels
SST-PB3-CNF-P	1120300008	Configuration Console Application, parallel key
SST-PB3-CNF-U	1120300009	Configuration Console Application, USB key

Other related products: IP67/IP20 Profibus I/O devices, gateway solutions, cable assemblies, diagnostic tools, network interfaces.